



Bridport Primary School Newsletter

JUNE 2026

Our value for this half term is: **CREATIVITY**

DIARY DATES

15-17.6.26

Year 6 Bristol trip

16.6.26

Year three and four
Quad Kids event

24-26.6.26

Year 5 Magdalen trip

30.6-2.7.26

Year one and two trip to
Washingpool Farm

3.7.26

FOBPS Colour Run

7.7.26

Dorset transfer day and
shuffle up at BPS

8.7.26

Sports day (KS1 am; KS2
pm)

15.7.26

Evening performance of
Matilda- Year 6 families

22.7.26

Year six leavers'
ceremony

23.7.26

End of term



Dear Parents and Carers,

It's been a busy start to our final half term of the year! Year one children have taken their phonics screening assessments this week, while the children in year four have been completing their multiplication test checks. Well done to all of them for giving it their best shot! Next week, our year two children will complete their end of Key Stage assessments.

Our year five and six children represented BPS at the Quad Kids tournament this week, bringing home medals for the whole team, as well as first place in the girls' competition for Niamh and third place in the boys' competition for Freddie. Well done to everyone who attended!

The children in year four enjoyed an art event this week and many of our year fives have participated in workshops up at Colfox, giving them a taster of secondary school life!

Year six also went up to Colfox last week for an interactive science workshop. Now they are getting ready for their Bristol residential next week, as well as rehearsing for their end-of-year production of *Matilda*. Transition visits to secondary school take place this half term too - there's never a quiet moment for our oldest children!

I know you will join me in wishing Ms Kite well as she continues to recover from her surgery: hopefully she will be back with us next week.

Best wishes,

Mrs Le Gassick

Learning today for our tomorrow



Dorset Mental Health Support Team in Schools

Signposting & other useful services



Healthier Together

Improving the health of children and young people
in Dorset, Hampshire and the Isle of Wight



Anna Freud
National Centre for
Children and Families

**DORSET
NEXUS**



CAMHS Dorset

Welcome to CAMHS Dorset, we give Mental health and wellbeing advice and support for children, young people, families, carers and professionals working across...

[CAMHS Dorset](#)



We have our own MHST page with information & resources

YOUNGMINDS
fighting for young people's mental health



@dorsetmhst

If you need direct help or advice, contact
Dorset Connection 0800 652 0190.



View on mobile



MHST Information & Contacts



@DORSETMHST

WWW.FACEBOOK.COM/CAMHSDORSETONLINE

WWW.INSTAGRAM.COM/DORSET_CAMHS



scan me



Dorset
Mental
Health
Support
Team in
Schools

BCP Team

dhc.mhsteam.bcp@nhs.net
01202 129150

North and East Team

dhc.mhsteam.northandeastdorset@nhs.net
01258 394065

Weymouth, Portland & West Team

dhc.mhsteam.weymouthandportland@nhs.net
01305 361900

Parent drop-in

Your next drop-in will be on:

1st July

Your school nursing team can provide non-judgemental and confidential support and advice about:

- Healthy lifestyle advice
- Emotional health and well-being support
- Bedwetting and toileting
- Nutrition and growth
- Sleep advice
- Signposting to various services
- Parenting advice
- Behaviour support

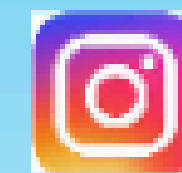
You can contact us via

- School nursing admin hub on 01929 557 558
- Parentline advice 5-19 texting service on 07312263131
- Website at www.dorsethealthcare.nhs.uk/school-nursing

Follow us on social media:



DorsetHealthCare School Nursing



[dorsethealthcare_schoolnursing](https://www.instagram.com/dorsethealthcare_schoolnursing)





community front rooms

Reaching a crisis point with your mental health?

Need support with your wellbeing? The Community Front Room Bridport, at The Harmony Centre, is here for you.

We offer a welcoming, non-judgemental and safe space for you to come and be, to talk and be listened to.

Our Mental Health Practitioners and Peer Specialists are specially trained to help you work out your next steps for your wellbeing. (18+yrs)

Open 52 weeks of the year!
Thursday – Sunday, 2.15pm – 9.45pm

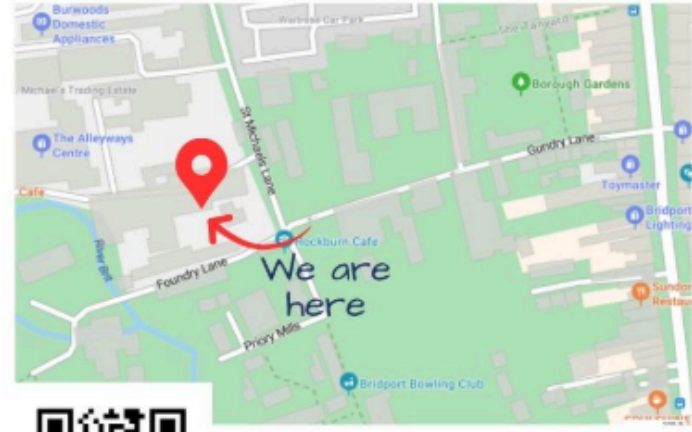
You do not need a referral. Just ring the doorbell or telephone us on 07385 290804 to request support or use [this link](https://www.dorsethealthcare.nhs.uk/patients-and-visitors/attend-anywhere/access-mental-health) for a virtual drop-in:



The Harmony Centre
Units 1 and 2, The Tower Building,
St Michael's Estate,
Bridport, DT6 3FN

(Entrance is via the courtyard off Foundry Lane. what3words: rainwater.condense.glitter)

Tel: 01308 801154
Email: info@theharmonycentre.org.uk
Web: www.theharmonycentre.org.uk



Call in to our Bridport centre for friendly support and advice or to join in one of our FREE weekly activities designed to support your wellbeing

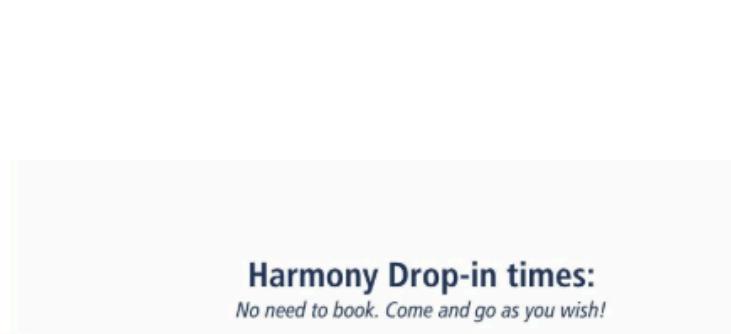


Harmony is an award-winning charity providing FREE friendly, welcoming and informal support for adults 18+ who are wanting to improve their mental health and wellbeing.

Call in to The Harmony Centre in Bridport during our centre opening times to chat to one of the team and find out how we can help you. Whether you would find it helpful to meet like-minded people, have a cup of tea, find out about local services or take part in one of our FREE weekly social activities, we're here for you.

We run the Bridport Community Front Room crisis service where you can speak to a specialist Mental Health Practitioner FREE without the need to seek a referral, Thurs to Sun 2.15pm - 9.45pm

We're also home to the Access Wellbeing hub, Bridport, where our friendly team are there to listen and give FREE 1:1 wellbeing advice and guidance support, Wednesdays 10am-3pm



Harmony Drop-in times:

No need to book. Come and go as you wish!

Monday
10am-1pm
Arts and Crafts,
- just pop in
2.30pm-3.30pm
Pilates

Wednesday
10am-1pm
Social Drop In - just pop in
10am-3pm
Access Wellbeing drop-in

Friday
10am-1pm
Feel good Friday

All at The Harmony Centre

Tuesday
11am-1pm
Harmony Garden Drop-in
behind St Mary's Church, Bridport - just pop in

2pm-4pm
Men's Health Walk, Bridport
Meet at shelter, St Marys Park

Bereavement Support Group
Join our dedicated group which meets every 1st Thursday of the month



Supporting your mental health

Lyme Regis at The Guild Hall: Mon 10am - 3pm
Maiden Newton at Webbers Piece: Tues 10am - 3pm
Beaminster at Prout Bridge: Thurs 10am-3pm
Bridport at The Harmony Centre: Weds/fri 10am-3pm

We know that sometimes, the challenges we face in our day-to-day life can impact on our mental health and become overwhelming.

Our hubs provide a welcoming space for you to find FREE SUPPORT on the issues that matter to you, including:

- Mental health and emotional wellbeing
 - Social connections and activities
 - Grief, loss and bereavement
 - Work, money, housing, benefits support
 - Support for carers and family members
- No referral or appointment needed

Tel: 01308 801154
accesswellbeing@theharmonycentre.org.uk

Find details on all our drop-in spaces and hubs at:

This is a link to an TED Talk about helping our children and young people cope with life's challenges, which you may be interested in.

[CLICK HERE](#)



SUMMER DRUM SCHOOL

LEARN. PLAY. HAVE FUN.

DATES

28TH
JULY

29TH
JULY

11TH
AUGUST

25TH
AUGUST

26TH
AUGUST



30 MINUTE LESSONS



RIPE BANANA STUDIOS,
WEYMOUTH



VARIOUS TIME SLOTS
AVAILABLE



COST: £100

BOOK & PAY DEPOSIT
BEFORE 1ST JULY
AND RECEIVE

20% OFF

& A FREE GOODIE BAG
ON COMPLETION OF
THE COURSE!



CONTACT FOR MORE INFO



barney@dorsetdrumschool.co.uk



WhatsApp
07418 627352

Summer Camp at Litton Lakes

the
Mindful
Digital
Collective

A summer camp designed to help children get active, try something new, be creative and grow in confidence through sport, outdoor fun and inspiring sessions.

Location

Litton lakes
DT2 9DH

Daily lineup



Multi-sports

Try a new sport, get active and have fun.



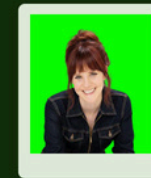
Forest school

Explore, play and learn in the great outdoors.



Creative sessions

Hands-on activities to spark imagination.



Guest sessions

Inspiring talks and activities from special guests.

Dates & Time

Week 1 - 17th - 21st August

Week 2 - 24th - 28th August

Monday to Friday 9am - 4pm

Prices

£40 per day

£160 per week

HAF places available

Perfect for 8-12 year olds

Questions? Get in touch

Email

nick@themindfuldigitalcollective.co.uk

Message Nick

07830324074



Book now



Schools out!



Have your say on childcare in Dorset

**Prize Draw of a £50 Amazon Vouchers
for 5 lucky winners**

Link here: [Childcare Survey](#)

or

SCAN ME



Dorset Council is inviting families to take part in a short Childcare Survey to help us understand local needs and improve services across the county. Your feedback will help shape future childcare provision and support for families.

Closes 17th of June 2026